

Fly Breeze Newsletter



This Fly Breeze newsletter is a bi-monthly news bulletin

March - April 2025 Issue 84



One of the newly built homes at the Kavorabip Kona

OTDF delivers seven new homes to Kavorabip and Atemkit village in North Fly

The Ok Tedi Development Foundation (OTDF) has delivered seven new houses to two Mine Villages in the North Fly District. Five in Kavorabip and two in Atemkit, continuing its commitment to improve living standards in the mine impact communities.

A handover ceremony was held in March at Kavorabip, where Mr. Jesse Pile, Chairman of the OTDF Board and General Manager for Social Performance and Sustainability at Ok Tedi Mining Limited (OTML), officially presented the house keys to the new homeowners. A ceremony was held marking the official opening.

In support all OTDF Board of Directors attended the event to witness this important milestone, reflecting the Foundation's community driven approach to development one that supports local leadership, better planning, and long-term sustainability.

"These homes are part of a trial housing design by OTDF's Infrastructure Development team," said Mr. Pile. "They show our ongoing commitment to improving housing and infrastructure for

the CMCA communities."

Village Planning Committee member Mr. Wilson Sokim spoke on behalf of the community. "This marks a new beginning for Kavorabip and Atemkit. These are not just homes, we are building our future."

OTDF acting CEO, Mr. Andrew Mari, thanked community members and stakeholders for their support and patience. "Delivering projects like these takes strong partnerships. We are grateful for OTML's support and the community's trust as we move forward together."

Each house includes three bedrooms (a master bedroom), essential household items, and two water tanks. These homes are part of a pilot program that will help guide future housing projects in other CMCA villages.

"This is a practical step toward our broader goal of improving living standards for the CMCA Communities," said Mr. Mari. "With strong local leadership, that vision is becoming a reality."

In this issue



Women invest with OTML



First quarter updates for the OTDF Board



NF Presents Dev. plan to Wai Tri Trust



Women deliver reading books to schools in CMCA regions



This newsletter is produced by the OTDF Public Relations to update and report on developments OTDF is carrying out throughout the Community Mine Continuation Agreement (CMCA) region, including the Western Province.

Want to know more about OTDF?

☎ 649 6426 or 649 5448

✉ team@otdfpng.org

🌐 www.otdfpng.org



Like and Follow Us



Local investors and partners in front of the new dongas at OTML Bige operations site

OTML and Nine Women & Children Associations unveil major investment with new campsite

The nine Women & Children Associations (W&CA) of the CMCA region invested K5.2 million towards the development of the newly named Kedi Illimbet Donga. The facility named after the Managing Director and Chief Executive Officer (MD&CEO) will house 150 workers at the OTML Bige operational site along the Ok Tedi River in North Fly.

This initiative marks a pioneering business venture by the W&CA with Ok Tedi Mining Limited (OTML) and reinforces a long-term commitment to economic empowerment and sustainable growth under the Women & Children Association Revised five year strategic plan.

The project, a collaborative effort between W&CA, the LMP 59 landowners, and the Alice River Trust (ATR), was successfully managed and delivered by OTML Bige Operations in partnership with local contractor LBL. The newly constructed Kedi Illimbet Donga is a vital infrastructure development that facilitates investment opportunities and strengthens business ties between the community and OTML.

Speaking at the official opening ceremony, President for Middle Fly Women & Children Association (MFWCA) Ms. Charlotte Matthews highlighted the importance of this milestone:

"The completion and opening of the 150 men Donga is a proud moment for the Women & Children Associations. This is our first investment with OTML, and I stand here representing nine W&C investment companies that have collectively contributed to this achievement. We look forward to further investment opportunities that will drive economic growth and empower our communities." Ms. Matthews reaffirmed the association's commitment to fostering sustainable development.

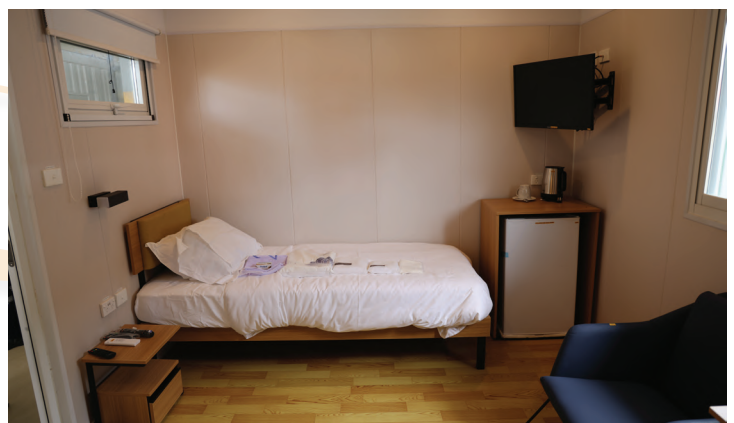
Mr. Andrew Mari OTDF Executive Manager Programs Services and Acting Chief Executive Officer expressed gratitude to OTML Bige Operations for their commitment and support in delivering the project, stating, "The right leadership at the right time has turned this vision into reality. True leadership and commitment have been instrumental in achieving this milestone."

Kedi Illimbet (OTML MD) in his keynote speech encouraged local companies to explore investment opportunities with OTML:

"We want revenue to circulate back to our communities. Today, we see the construction of dongas; tomorrow, we envision power lines and broader infrastructure development. I urge local businesses to consider investing with OTML, if you take the initiative, I will meet you halfway."

This investment opportunity involves a 50 percent stake valued at K5.3 million in OTML's 150-men accommodation project at its Bige Operations.

The other 50 percent ownership is equally split between the Alice River Trust (15 Beneficiary Villages) and LMP79 (7 Beneficiary Landholding Clans) at 25 percent shares respectively.



A conducive fullfunctional self contained room



Acting CEO Mr. Mari presents quarter one updates to the board

OTDF BOD Applauds Progress in Project Delivery to CMCA Communities

Ok Tedi Development Foundation (OTDF) Board convened for its 71st Board Meeting in mid March in Tabubil, marking the first full forum and delivering renewed energy and strategic focus to its role in driving development across the 158 CMCA and Mine villages in Western Province.

One of the key highlights of the meeting was a remarkable increase of the Trust Project delivery. Acting Chief Executive Officer, Mr. Andrew Mari, presented a review showing OTDF's project delivery rate had surged from 33% in the fourth quarter of 2024 to an impressive 70% by the first quarter of 2025. The Board commended this progress, attributing it to strengthened internal leadership, improved operational efficiency, and a focused commitment to the Foundation's vision.

"This progress in Trust delivery speaks volumes about the dedication and resilience of our management and staff," said Board Chairman Mr. Jesse Pile. "We are witnessing tangible results that are directly impacting our community, exactly what OTDF was established to achieve. We must now stay consistent and ensure we are doing as we say, bringing real change to the lives of our people."

Associate Director Ms. Melinda Kera (Representative from the Department of Mineral Policy & Geohazard Management) expressed how proud she was to have seen the increase in project delivery. "It's pleasing to see improvements in project delivery. However, as we go through a year of reviews and the ongoing Mine Life Extension (MLE) discussions, we must stay focused and not lose sight of our purpose," she said.

The BOD also acknowledged the current five-month period without a formally appointed CEO, recognising Mr. Mari's capable leadership during this transition. His tenure since November 2024 has reinvigorated OTDF's momentum, bringing disciplined focus to program delivery.

A key strategic discussion centered on OTDF's collaborative partnership with the Office of the Provincial Administrator, led by Mr. Robert Alphonse Kaiyun. The alignment of the OTDF Livelihood

Development Program with the Provincial Development Plan was acknowledged as a critical step forward. "For this to work, we must continue working together for the betterment of the CMCA communities," Mr. Pile stated.

In his closing remarks, Mr. Pile reaffirmed the Foundation's mission, saying, "We are for the people. We are serious about what we say because we carry the hopes of the communities we serve. Let us walk the talk and honour the promises we make."

The Board concluded the meeting with a renewed sense of urgency and responsibility, committed to delivering sustainable development outcomes and empowering the CMCA communities through integrity, partnership, and transparency.

As OTDF advances through 2025, it remains steadfast in its mission: to be leading development partner in improving self-sustainability and the quality of life for the communities of the Western Province.



Full forum for the first quarter board meeting



Representatives from the CMCA Trusts, Kina Bank and OTDF

CMCA Trusts secure professional fund management with signing of investment management agreement

Ok Tedi Development Foundation (OTDF) as Statutory Manager of the future generation funds for the eight Community Mine Continuation Agreement (CMCA) Trust regions facilitated the signing of the Investment Management Agreement (IMA) between the leaders representing the 8 CMCA Trust and Kina Wealth Management Limited (KWML).

The Agreement, signed in Port Moresby, formalizes the appointment of KWML as the exclusive Investment Manager of the CMCA Trust Investment Portfolios. KWML will act as Custodian, safeguarding assets in accordance with the Trusts' investment objectives.

The IMA outlines a conservative, transparent, and compliance-focused investment strategy aimed at delivering sustainable returns to the beneficiary communities of the CMCA regions of Western Province. The portfolios will be directed toward investment into secured assets such as Government Bonds and Bills, and high-performing blue-chip equities on the PNG and Australian stock exchange, with strong governance and reporting mechanism through quarterly and annual reporting.

Mr. Ivan Vidovich, Group CEO & Managing Director of Kina Securities Limited, remarked: "We are honoured to be entrusted with managing the CMCA Trusts investment portfolios. At Kina, we are committed to delivering professional fund management that aligns with the Trusts' values and objectives. This agreement reflects our shared commitment to building lasting economic value for the CMCA communities through disciplined and transparent investment practices."

Mr. Jesse Pile, Chairman of the OTDF Board, said: "Today's signing is a pivotal milestone for the CMCA Trusts. This agreement strengthens the governance and integrity of how these community assets are managed. It is a demonstration

of OTDF's commitment to ensuring that every kina is accounted and better managed for the future of the mine associated communities of Western Province."

Mr. Andrew Mari, Acting CEO of OTDF, added: "This partnership ensures a professionally managed, well-diversified investment approach that aligns with the aspirations of our CMCA beneficiaries. It is a critical step towards achieving long-term sustainability and growth of the trust funds under OTDF's management."

The IMA is effective from 30 April 2025 and remains in place unless terminated by mutual agreement or under specific provisions outlined in the Agreement.

This strategic collaboration marks a new chapter in the management of the CMCA Trust portfolios and ensures that the communities of Western Province continue to benefit from prudent, secure, and future-focused investment of their trust funds.



Kina Bank & OTDF Executives pictured with Trustees at Hilton Hotel



Signing Ceremony of the Custodian Deed at the Hilton Hotel, Port Moresby

CMCA Trusts Appoint Teutonic Limited to manage investment properties

A signing ceremony was held on 30 April 2025 at the Hilton Hotel in Port Moresby to mark a key milestone for the Community Mine Continuation Agreement (CMCA) Trusts. The event saw the official signing of an agreement between the eight CMCA Trust Trustees, Ok Tedi Development Foundation (OTDF), and Teutonic Limited.

The agreement appoints Teutonic Limited as the Custodian of the CMCA Trusts' investment properties, which are managed by OTDF. As Custodian, the company will be responsible for managing and protecting these properties, ensuring they are maintained and used for the benefit of the communities, in line with directions from the Trustees.

Trust Syndicate Chairman Mr. Tirira Togama of Aduru village, Dudi Development Trust region thanked the partners involved for wisely managing the people's investments funds this far. He said: "I am pleased to say that the decisions we make as leaders today must benefit the future generations., on behalf of the CMCA Trusts, I thank the Trust Administration for helping to provide support in securing the people investment funds, thank OTDF and Teutonic Ltd".

Steven O'Brien, a legal expert and Director of Teutonic Limited, said the agreement highlights their commitment to strong and responsible asset management. "We are proud to support the CMCA communities by protecting and managing their assets responsibly," he said.

OTDF Chairman Jesse Pile welcomed the partnership, saying, "This agreement reflects our ongoing commitment to improve the livelihoods of our communities. The Trusts' assets will continue to deliver long-term benefits for the people."

Andrew Mari, Acting CEO of OTDF, added, "This step strengthens how we manage community assets and stays true to the original purpose of the CMCA – to create real and lasting impact for our communities."

The signing marks an important move to secure and grow the CMCA Trusts' assets, ensuring they continue to support development and better outcomes for the beneficiary communities.



Kina Bank & OTDF Executives pictured with Trustees at Hilton Hotel



Health & Safety

Mr. Andrew Baine performing cardiopulmonary resuscitation (CPR) on a dummy during the First Aid Training

First Aid Training for OTDF staff

Seven staff completed a in department First Aid Training, equipping themselves with vital emergency response skills. The training was conducted by OTML Kiunga Emergency and response Paramedic Officer Mr. Robin Ignatius, on 1 March, at the OTDF Conference Room.

The one-day training provided hands on experience for participants to apply first aid techniques in real life emergency scenarios. The session included interactive emergency play out exercises, where each participant had to respond to simulated emergency situations, boosting their understanding of key first aid principles. These practical exercises helped participants build confidence in assessing injuries, prioritising care, and administering appropriate first aid interventions.

Mr. Andrew Baine said, “I am a field officer and many times we work in communities far from the nearest health centers, that is why this training is vital knowledge for our job and the exposure we have to the environment.”

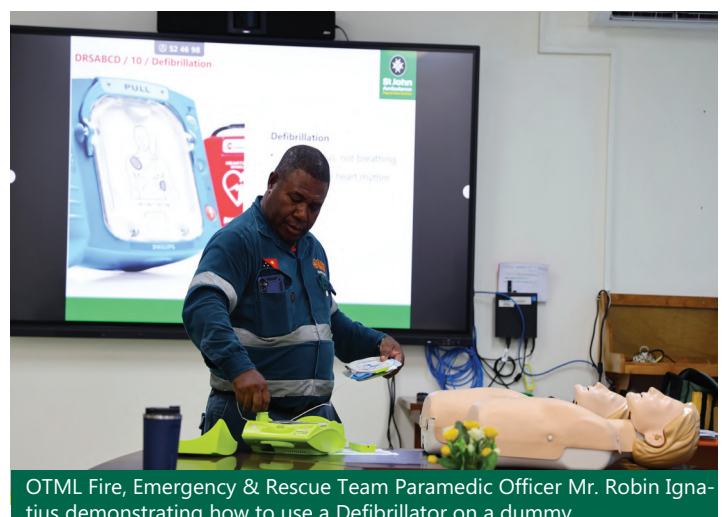
Eddie Vincent an IT support officer said: “I appreciate the first aid skills training, I am glad I attended, as the knowledge will help me as my work deals with exposure to electricity”.

Through out the day, trainees learned crucial life saving techniques, including how to assess a patient, call for help, perform cardiopulmonary resuscitation (CPR), control bleeding, manage fractures, and handle medical emergencies such as choking and cardiac arrest. Each participant had the opportunity to step into

a first responder role, following the structured first aid procedures outlined during the training. By engaging in realistic role-play scenarios, they developed a deeper understanding of how to remain calm under pressure and apply their knowledge effectively in critical situations.

Mr. Ignatius provided valuable insights and feedback, ensuring all participants gained a thorough grasp of first aid fundamentals. By the end of the session, all participants had successfully demonstrated their ability to handle medical emergencies with confidence and competence, a skill set that could prove invaluable in both professional and community settings.

OTDF is devoted to ensuring staff are prepared to handle health and safety emergencies, both within the workplace and in the communities they serve. By doing so it strengthens one of OTML's core value which is Safety.



OTML Fire, Emergency & Rescue Team Paramedic Officer Mr. Robin Ignatius demonstrating how to use a Defibrillator on a dummy

Month in pictures



CES delivery of fode materials to students in Suki



Nupmo Holdings BOD Meeting #1, 2025



Aiambak rice transplanting demo training



Tutuwe Trust Meeting in Kavieng



Food Security field visit to Mimingre village



Village Health Assistant(VHA) Training in Tapila



Women Presidents Meeting in Port Moresby



OTDF Staff after completing First Aid Training



Ilenkenai Community School receive library books

Ilenkenai and Miasonmae in the Tutuwe region receive Library books from the Women and Children Association

In its continuous effort towards enhancing educational resources, the Women and Children Association (W&CA) delivered a generous donation of library books to two community schools in the Tutuwe Region on the 22 April this year. The beneficiaries, Ilenkenai and Miasomnae Community Schools, received nine boxes of books each as part of WCA's budgeted initiative for 2025, made possible through the support of the Ok Tedi Development Foundation.

The delivery led by Ms. Elfredah Kenamwoh, President of the Tutuwe, along with her vice president visited the schools to deliver the books. At both schools, enthusiastic students welcomed the new additions to their library collections, marking a special occasion for these small but vibrant learning communities.

Head Teacher Mr. Mathias Turkake of Miasomnae Community School expressed his heartfelt gratitude to the Association for its thoughtful gesture. "This is a very small school, with a population of just 107 students, and it is often overlooked," he noted. "Our students receive what is given to them without complaint. The delivery of these library books further encourages our learners that knowledge is power and in order to have that knowledge we all must be great readers. Thank you for the kind gesture; we greatly appreciate it."

The delivery not only improves students learning but also provides them with access to a diverse range of literary materials that can inspire and nurture their future ambitions. Both school communities are eager to make the most of this invaluable resource, fostering a love for reading that will benefit their students for years to come.

This initiative is part of a broader commitment by the Women and Children Association, supported by the Ok Tedi Development Foundation to uplift and support educational endeavours in the CMCA regions.

By investing in libraries books for primary and community schools, they aim to create an equitable learning environment where every child has the opportunity to thrive.



Miasomnai Community School showing the new Library books



Miasomnai Elementary student showing new reading book



Community Development

Mr. Noel Joel showing Mr. Baine the newly planted pawpaw trees in the garden

Tutuwe Youths lead agricultural revival in Timindemesuk with support from OTDF

Local youths from Timindemesuk village in the Tutuwe region have joined hands to transform their community through agriculture, thanks to a youth-driven initiative supported by the Ok Tedi Development Foundation (OTDF).

What started as a small idea has grown into a highly productive farming project making a real difference in local lives. In January this year, the Timindemesuk Youth Group, led by Youth Chairman Mr. Noel Joel, began cultivating a 2 hectare plot of land with the vision of using agriculture as a tool for empowerment, income generation, and sustainable development. Today, their hard work is bearing fruit.

The group grows a range of crops including varieties of cabbage, eggplant, watermelon, cucumber, pawpaw, aibika and many more. These are harvested regularly and sold at the Kiunga Main Market, where the demand for fresh local produce continues to grow. The group currently earns between K200 and K300 per day from their sales, a great income stream for a rural youth led project.

According to Mr. Joel, the initiative is more than just a way to make money it's about creating a future.

"Many of our young people are sitting idle, with no formal employment or opportunities," said Mr. Joel. "We wanted to show the community that, we are blessed with enriched soil that we can use to put money in our pockets. That if we toil the land, we will have money and also food to feed others and ourselves. Thanks to OTDF's support, we've been able to turn this vision into reality."

OTDF has supported the group by providing seeds and advice on sustainable farming methods. This initiative aligns with OTDF's broader mandate to empower communities across the CMCA corridor by encouraging self-reliance, skill-building, and long-term development.

OTDF North Fly rep, Andrew Baine, commended the Timindemesuk youths for their leadership and initiative.

"This project is a testament of what we as OTDF do in the communities, this is how we envision the communities to be self-sustaining," said Mr. Baine. "It reflects our commitment to community development, where communities take charge of their future using the resources available for them."

The project has already inspired interest from within the community, and the youth group is considering running training on sustainable agricultural practices, crop varieties, and possibly livestock in the future.



Seedlings in the nursery ready to be transplanted



First batch of women from Mepu village receiving assistance from Middle Fly Women Social Issue Concern Group

Middle Fly Women Social Issue Concern Group reinvests community asset revenue for self empowerment in Mepu Village

Demonstrating the power of community leadership and women's empowerment, the Middle Fly Women Social Issue Concern Group (MF WSICG) launched a small business support initiative aimed at improving the livelihoods of women in Mepu Village.

This initiative, spearheaded by Chairlady Ms. Augustina Dewap, is being funded through income generated from a community-owned 15-seater vehicle, procured by the Middle Fly Women and Children Association in 2024.

The asset used to generate revenue is one of the 18 projects delivered by the Middle Fly Women Association to its registered association members of each WSICG. As transport assets the association distributed 17 outboard motors and one vehicle to Middle Fly villages in June 2024. While most riverine communities received outboard motors, Mepu Village, being an inland community, was allocated the vehicle to support its transport and economic mobility. Since then, the vehicle has been under the management of the MF WSICG, which has successfully operated it to generate sustainable revenue.

Recognising a critical opportunity to reinvest in the community, Ms. Dewap and her executives decided to channel the earnings from the vehicle into empowering local women through small and micro enterprise (SME) development. With a starting budget of K10,000, the group have supported 20 women from Mepu Village with K500 each to expand income-generating activities.

"This initiative came about because we want to start supporting our women at a community level first," said Chairlady Dewap. "We are proud to stand beside the women of Mepu and give them goods they need to start up a small SME to have money for basic needs for themselves and their families."

The initiative has received strong support from Middle Fly Women and Children Association. President Ms. Charlotte Matthews praised the WSICG's proactive approach, stating:

"You have proven to the association that we can rely on you to take initiative to do things to help the women when we are not around. This is exactly the kind of community leadership we want to see across

our communities."

Beyond the immediate benefits, the project is also laying the groundwork for identifying capable and committed women entrepreneurs who may qualify for larger SME grants and regional development funding in the future. The transparent management of community assets and reinvestment of income for social development is an exemplary model to other Middle Fly villages.

The Ok Tedi Development Foundation (OTDF), which has long championed women's empowerment and economic inclusion in the Western Province, applauds the leadership and vision shown by Ms. Dewap and her team.

"This initiative promotes both sustainable community and women development," says CDO Ms. Bala Tedumo. "It reflects how local ownership, responsible asset management, and a focus on women's economic participation can transform lives and build stronger, more resilient communities."

OTDF remains committed to working alongside women-led groups, local associations, and all community stakeholders to further inclusive and impactful development across the Fly River corridor and beyond.



Moses Kalup with VPC and Nathan Samuel cut ribbon to officially open new Community Hall

Gii village receives community hall and common facilities

The people of Gii village in the Tutuwe Region celebrated the official opening of their new community hall and two ventilated improved pit (VIP) toilets on 9 April 2025.

These important facilities were funded and supported by the Ok Tedi Development Foundation (OTDF) through its Village Development Fund (VDF), which helps local communities carry out projects they choose for themselves. The celebration brought together community leaders, elders, women, youth, and OTDF staff to mark the successful completion of a project driven by the village's own priorities and planning.

The new community hall is already making a big difference. It will be used for village meetings, health and education awareness sessions, and cultural events—bringing people together in a safe, central space. The two VIP toilets are also a major improvement. In rural areas like Gii, access to clean and safe toilets is limited. These new toilets will help improve hygiene, reduce the risk of disease, and provide privacy and safety, especially for women and girls. They are part of OTDF's wider goal to support water, sanitation, and hygiene (WASH) in the CMCA region.

OTDF's Manager for Program Services—Sustainable Development, Mr. Moses Kalup, praised the community for leading the way: "This is a great example of people working together to develop their own community. The Village Development Fund is here to support communities like Gii that take initiative and plan well. We congratulate everyone for this achievement." He added that this project reflects OTDF's long-term goal of helping CMCA communities become more self-reliant and resilient by investing in basic services and local leadership.

The opening was more than just a handover of a building, it was a celebration of progress and a shared vision for the future. The project also created short-term jobs for local youth, helping them gain skills and feel ownership of the project. Community leader Nathan Samuel shared his gratitude:

"We thank OTDF for believing in us. These two infrastructures will help us live healthier lives and give us a place to gather, learn, and plan our future." The success of Gii village shows what is possible when communities and partners like OTDF work together with trust and shared purpose.



The newly opened Community hall in Gii village



One of the two new VIP Latrins launched



Wai Tri Trust meeting at the Seadler Bay Hotel in Manus

OTDF Facilitates Wai Tri Region Trust Meeting in Manus as appreciation of service

The Ok Tedi Development Foundation (OTDF), through its Trust Administration, successfully convened the Wai Tri Region Trust Meeting in Manus in late March. The purpose of the meeting was to deliberate on priority development projects and finalise the 2025 budget allocations for the region under the Community Mine Continuation Agreement (CMCA) Trust framework.

Significantly, this meeting also marked the final term for the current Wai Tri Trustees, who have served their communities with dedication throughout their tenure. Their leadership and contributions were recognised as they participated in their last official meeting before a new group of trustees is appointed. The strategic gathering brought together the Wai Tri Trustees, and OTDF officers, alongside a special presentation by the North Fly District Planners Office, who outlined the North Fly District Development Plan. This presentation was instrumental in guiding discussions to ensure the Wai Tri Trust-funded projects align with the Western Province Integrated Development Plan (2023 – 2027).

Trust Administration Manager, Mr. Johanis Saferius reaffirmed OTDF's commitment to community-driven and government-aligned development. "The Trust platform empowers people to lead their own development. Aligning with district and provincial plans strengthens partnerships and enhances project impact," he said.

During the meeting, proposed projects across priority sectors including education, infrastructure, water and sanitation, and sustainable livelihoods were reviewed and assessed. The outcome was a collective agreement on a finalised project list and budget for 2025, ensuring the region's Trust resources be utilised effectively and strategically.

As the current trustees conclude their service, OTDF acknowledged their role in promoting transparency and good governance. The Foundation also assured a smooth transition

to new trustees who will carry forward the work of driving development at the community level.



Mr. William Yari ,NF District Planner during his presentation

Time Out



1. A break with the youths at Timindemasuk
2. Leaders time out on clients day
3. Greetings from Tabubil

4. Trustees with the Trust Team at the Hilton Hotel
5. Gentlemen sharing smiles on a busy day
6. Tutuwe Trutees with Mr. Nami in Kavieng

STRONGIM
WAN
WOK
PASIN